

Daisy Farm Crafts

Crochet Baby Bibs



Pattern by Tiffany Brown

MATERIALS

Bernat Baby Softee Cotton (60% Cotton, 40% Acrylic, 120 g/4.2 oz, 232 m/254 yds

For 3 bibs: 2 skeins Feather Gray, 1 skein Cotton, 1 skein Clear White

Size G/4.00mm hook, Scissors, Tapestry Needle

Iron-on velcro

Graphs (see below)

SIZE

Gauge: 5 SC and 6 rows = 1 inch

Finished bib size 7.5 inches wide and 13.5 inches high

STITCH

Single Crochet (SC): Insert your hook, yarn over (YO) and pull up a loop, YO and pull through two loops on hook.

BUNNY BIB PATTERN

With Feather Gray, **chain 27**.

Row 1: Following the graph starting at row 1 stitch #5, bottom right hand corner, work right to left in single crochet, changing color to Clear White for stitch #10 through #25, then change to Feathered Gray for #26 through #30. CH 1 and turn. (26 SC)

Tip: drop Feather Gray while working with White and then add Feather Gray by pulling across the back of the work and drop White, do not cut, keep the yarn to the back of the work (inside) as this will be covered by a second solid color bib to hide the ends. (If you prefer only making a single bib, carry the yarn through the rows.)

Row 2: Read graph left to right following color changes, making sure you keep the ends to the inside of the work. CH 1 and turn. (26)

Row 3: Increase by working 2 SC into the first stitch, follow graph across, end row with 2 SC in the final stitch. CH 1 and turn. (28)

Row 4: Read graph left to right, work 1 SC into each SC following color changes according to graph. CH 1 and turn. (28)

Row 5: Increase by working 2 SC into the first stitch, follow graph across, end row with 2 SC into the final stitch. CH 1 turn. (30)

Row 6: Read graph left to right, work 1 SC into each SC following color changes according to graph, CH 1 and turn. (30)

Row 7: Increase by working 2 SC into the first stitch, follow graph across, end row with 2 SC into the final stitch. CH 1 and turn. (32)

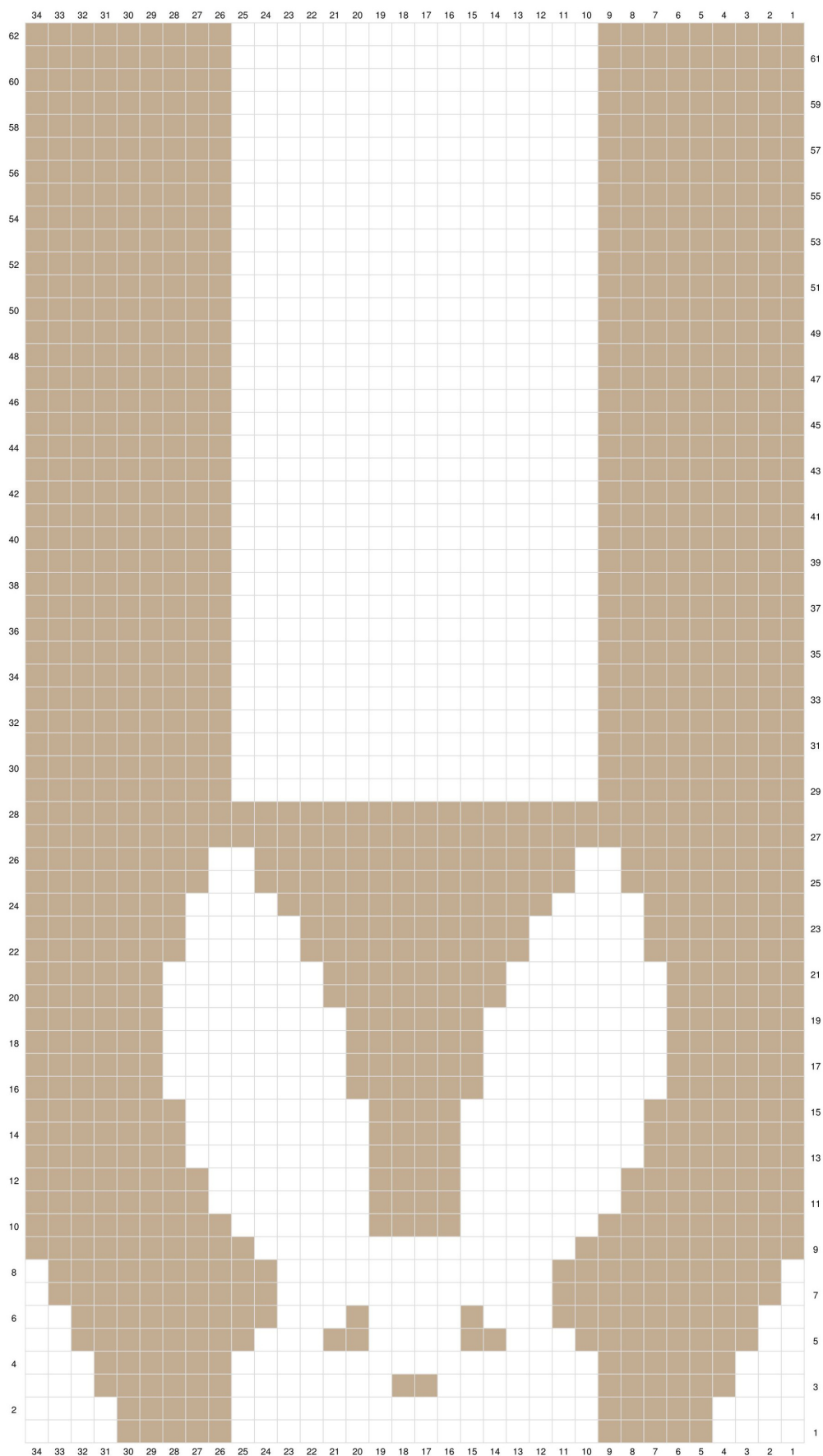
Row 8: Read graph left to right, work 1 SC into each SC following color changes according to graph, CH 1 and turn. (32)

Row 9: Increase by working 2 SC into the first stitch, follow graph across, end row with 2 SC into the final stitch, CH 1 and turn. (34)

Rows 10 - 28: Read graph right to left on odd rows and left to right on even rows following color changes. (34)

Rows 29 - 62: (first strap) Work SC into the first 9 SC. CH 1 and turn. (second strap) pull up a loop in stitch #26, ch 1 and SC into the same st. SC into each of the next 8 stitches to the end, CH 1 and turn.

Make a second bib all one color. Attach 2 sides together by working 2 SC into every other stitch and 2 SC per every other row to join the two sides together. Tie off and weave in the ends. Use Iron On Velcro to fasten the ends together. (Avoid using the stick on and sew, I used that first on the bunny bib and it made the needle sticky and hard to work with.)



CHECKERBOARD BIB PATTERN

With Feather Gray, **chain 27**.

Row 1: Following the graph starting at row 1 stitch #5, bottom right hand corner, work right to left in single crochet, changing color to Cotton when indicated in the graph by pulling through with Cotton on last step of the stitch. Work over the tail of Feather Gray, carrying the yarn through the row. Continue changing colors according to the graph. CH 1 and turn. (26 SC)

Row 2: Read graph left to right following color changes, pull through with Cotton at the end of the row, CH 1 and turn. (26)

Row 3: Increase by working 2 SC into the first stitch, the first stitch will be in Cotton, the second stitch with feathered gray. Follow graph across, end row with 2 SC in the final stitch. CH 1 and turn. (28)

Row 4: Read graph left to right, work 1 SC into each SC following color changes according to graph. CH 1 and turn. (28)

Row 5: Increase by working 2 SC into the first stitch, follow graph across, end row with 2 SC into the final stitch. CH 1 turn. (30)

Row 6: Read graph left to right, work 1 SC into each SC following color changes according to graph, CH 1 and turn. (30)

Row 7: Increase by working 2 SC into the first stitch, follow graph across, end row with 2 SC into the final stitch. CH 1 and turn. (32)

Row 8: Read graph left to right, work 1 SC into each SC following color changes according to graph, CH 1 and turn. (32)

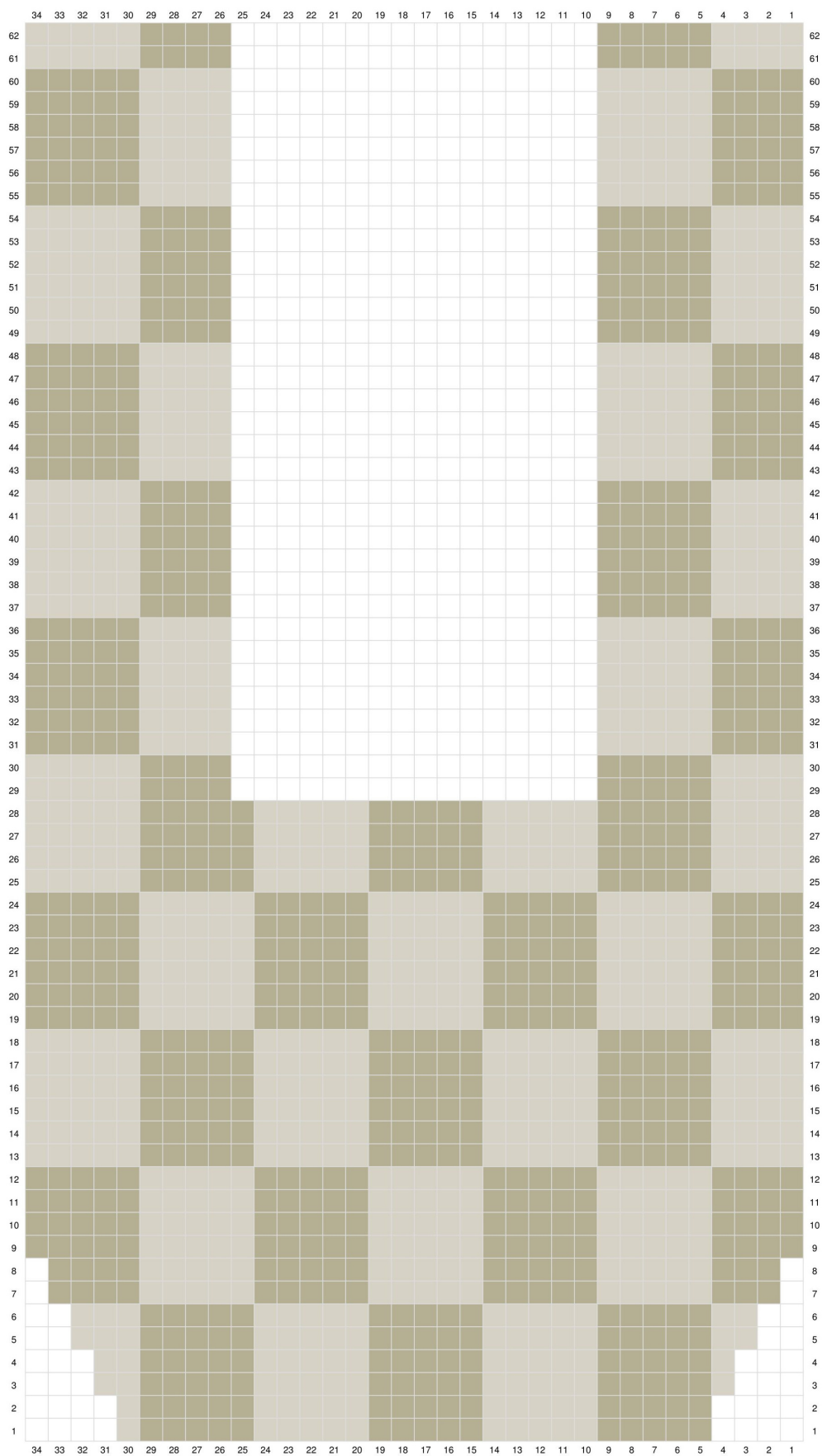
Row 9: Increase by working 2 SC into the first stitch, follow graph across, end row with 2 SC into the final stitch, CH 1 and turn. (34)

Rows 10 - 28: Read graph right to left on odd rows and left to right on even rows following color changes. (34)

Rows 29 - 62: (first strap) Work SC into the first 9 SC. CH 1 and turn. (second strap) pull up a loop in stitch #26, ch 1 and SC into the same st. SC into each of the next 8 sts to the end, ch 1 and turn.

Tie off and weave in all ends. Work one round of SC around the edge of the bib by working 2 SC in every other stitch and 2 SC every other row. Work 1 SC on the corners when needed.

Attach Iron On Velcro.



STRIPED BIB PATTERN

With Feather Gray, **chain 27**.

Row 1: Following the graph starting at row 1 stitch #5, bottom right hand corner, work right to left in single crochet, CH 1 and turn. (26 SC)

Row 2: Read graph left to right, work 1 SC per square. Pull through with Cotton on last step of the stitch, CH 1 and turn. (26) (don't cut Feather Gray)

Row 3: Increase by working 2 SC into the first stitch, end row with 2 SC in the final stitch. CH 1 and turn. (28)

Row 4: Read graph left to right, work 1 SC into each SC. Pull through with Feather Gray on last step of last SC, CH 1 and turn. (28)

Row 5: Increase by working 2 SC into the first stitch, end row with 2 SC into the final stitch. CH 1 turn. (30)

Row 6: Read graph left to right, work 1 SC into each SC, pull through with Cotton on last step of last SC, CH 1 and turn. (30)

Row 7: Increase by working 2 SC into the first stitch, end row with 2 SC into the final stitch. CH 1 and turn. (32)

Row 8: Read graph left to right, work 1 SC into each SC, pull through with Feather Gray on last step of last SC, CH 1 and turn. (32)

Row 9: Increase by working 2 SC into the first stitch, follow graph across, end row with 2 SC into the final stitch, CH 1 and turn. (34)

Rows 10 - 28: Read graph right to left on odd rows and left to right on even rows following color changes of every 2 rows. (34)

Rows 29 - 62: (first strap) Work SC into the first 9 SC. CH 1 and turn. (second strap) pull up a loop in stitch #26, CH 1 and SC into the same st. SC into each of the next 8 sts to the end, CH 1 and turn.

Tie off and weave in all ends. Work one round of SC around the edge of the bib by working 2 SC in every other stitch and 2 SC every other row. Work 1 SC on the corners when needed.

Attach Iron On Velcro.

